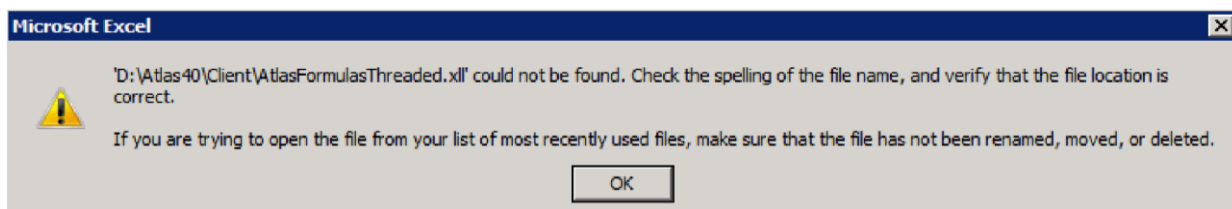


Atlas Formulas Threaded Error

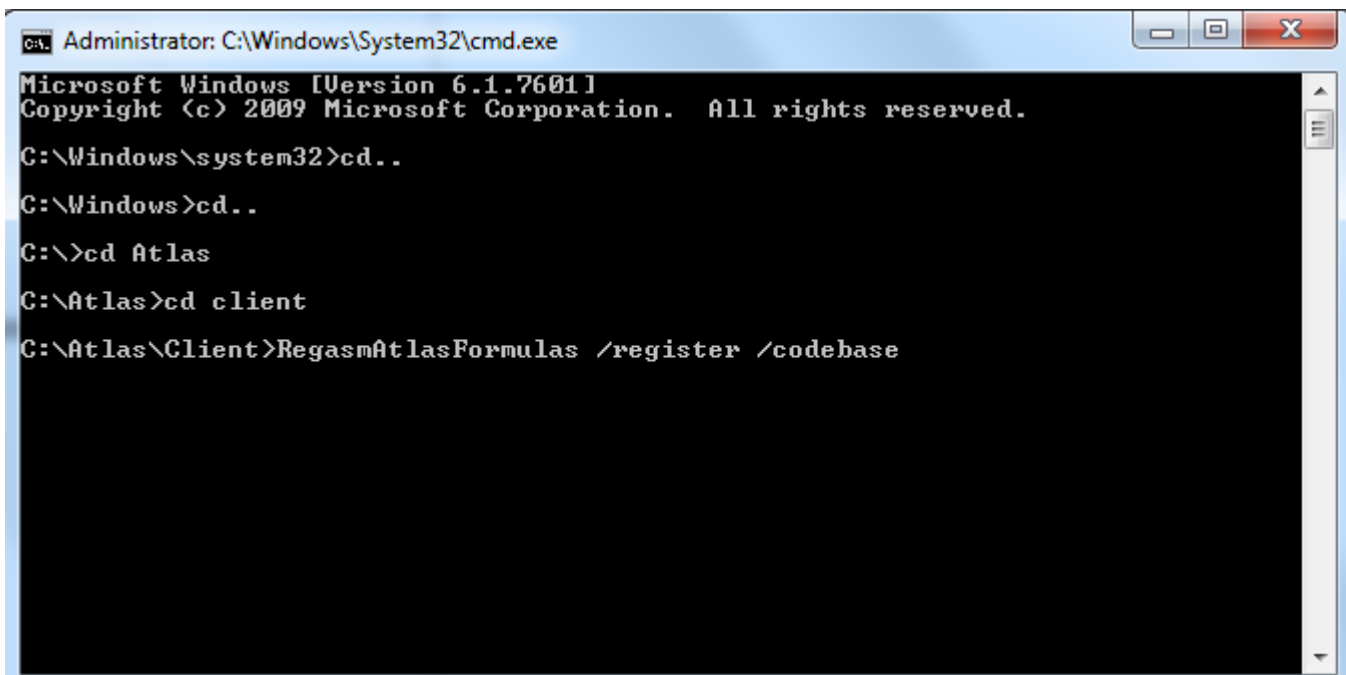
Symptoms



Resolution

1) Open a CMD window with Administrator privileges.

Browse to where the Atlas Client is installed and Register the Atlas Formulas (RegasmAtlasFormulas /register /codebase – press Enter):

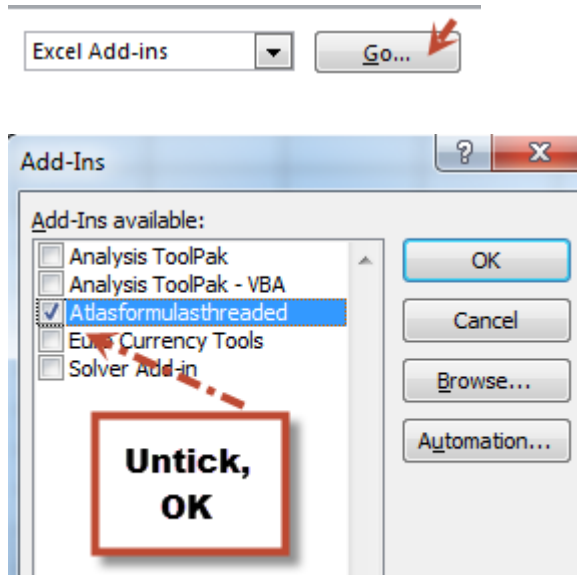


```
Administrator: C:\Windows\System32\cmd.exe
Microsoft Windows [Version 6.1.7601]
Copyright (c) 2009 Microsoft Corporation. All rights reserved.

C:\Windows\system32>cd..
C:\Windows>cd..
C:\>cd Atlas
C:\Atlas>cd client
C:\Atlas\Client>RegasmAtlasFormulas /register /codebase
```

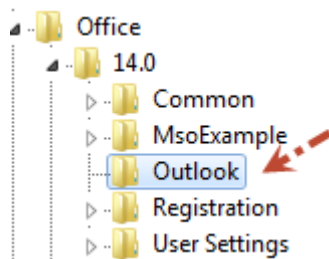
2) If a newer version of Atlas is available, upgrade Atlas. This has the double advantage of having the latest Atlas build and benefiting from the latest enhancements and bug fixes, while also registering the formulas. Be sure to upgrade both the Atlas Client and the Atlas Server.

3) If you are not using Cache Lists, you can disable the Threaded Formulas add-in from Excel:
Go to File – Options – Add-ins:



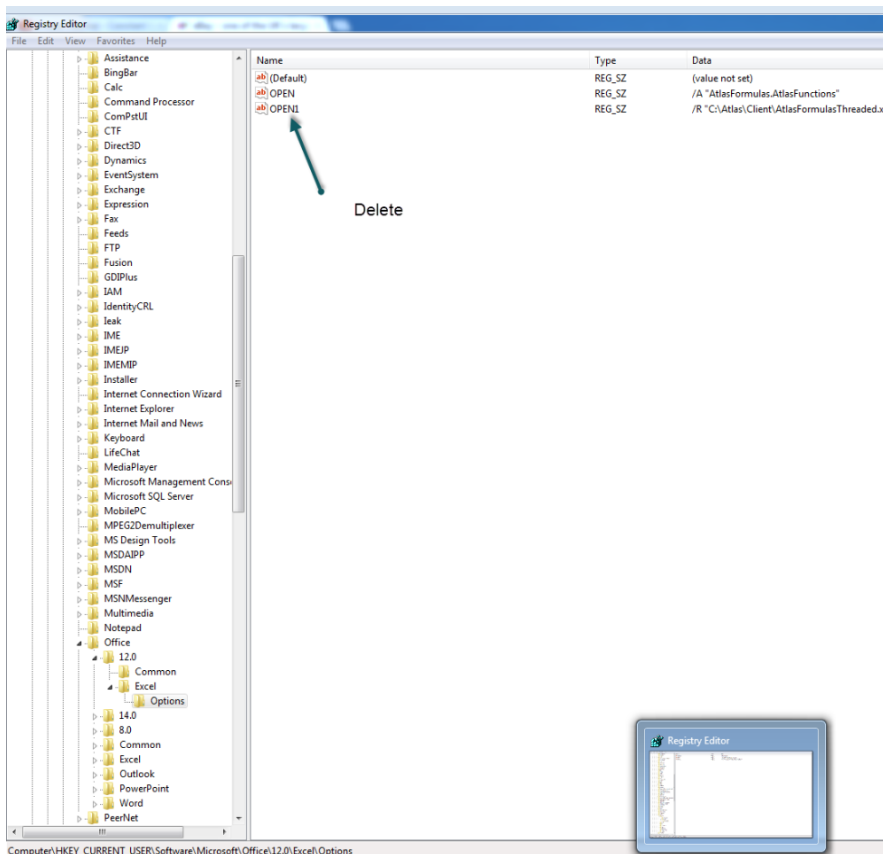
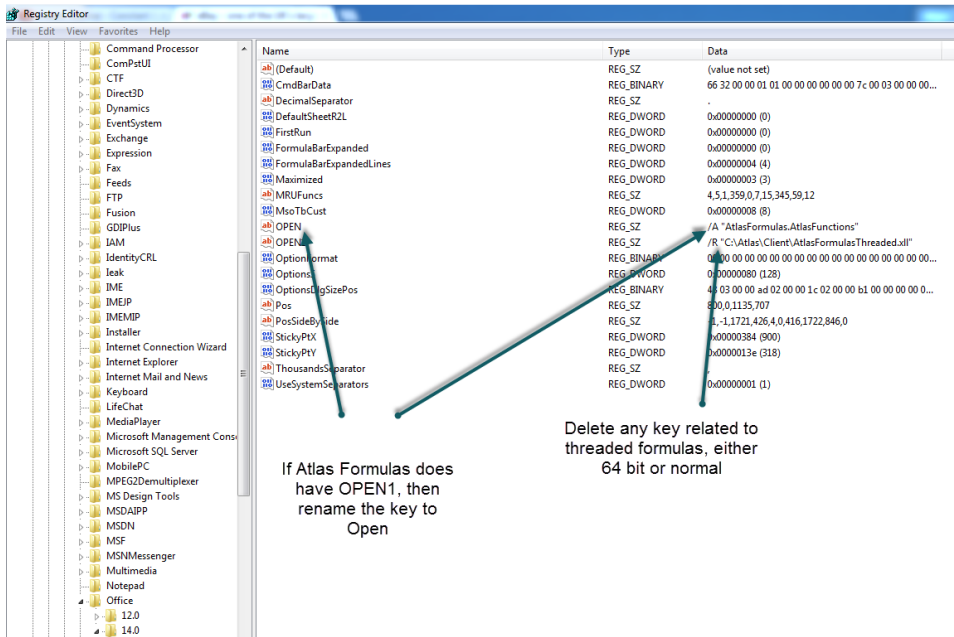
4) In rare cases, when an IT admin deleted the bitness registry key by mistake or this did not get installed for some reason, Atlas Client will get confused and will automatically try and register the 32bit version of Threaded Formulas. If you are running a 64bit version of Office, what you need to do is create that registry key with the x64 value.

In Registry Editor go to: Local Machine – Software – Microsoft – Office – 14.0 – Outlook. This folder gives the bitness. If it is not present, create it with the x64 value:



Name	Type	Data
(Default)	REG_SZ	(value not set)
Bitness	REG_SZ	x64

Then close the Atlas Client from the taskbar, delete the references for Atlas Threaded Formulas from the registries (from local Current User) and then start Atlas and log in. Atlas will now find the bitness registry key and will register the correct version of threaded formulas. (printscreens below)



Post your question to the Atlas Forums or follow our social pages for regular updates.

