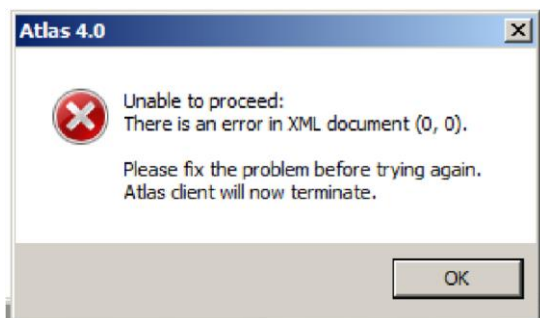


# Error in XML Document (0,0)

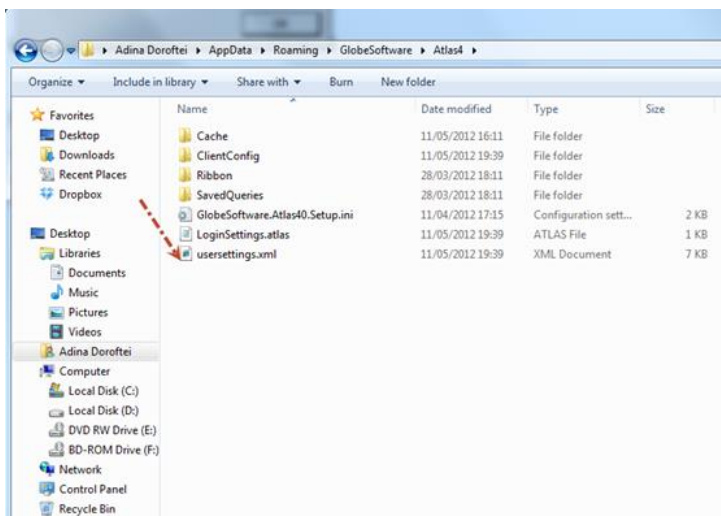
## Symptoms



The user settings are corrupted. To fix this you need to delete the usersettings.xml file.

## Resolution

The XML error means that the user settings got corrupted. To fix this you need to delete the usersettings.xml file. You can find it in: C:\Users\“Currentuser”\AppData\Roaming\GlobeSoftware\Atlas.



An easier way to get to this folder would be by typing `shell:local appdata` in the Start search bar, going back one level, to AppData, then opening Roaming – GlobeSoftware – Atlas.

Post your question to the Atlas Forums or follow our social pages for regular updates.

